

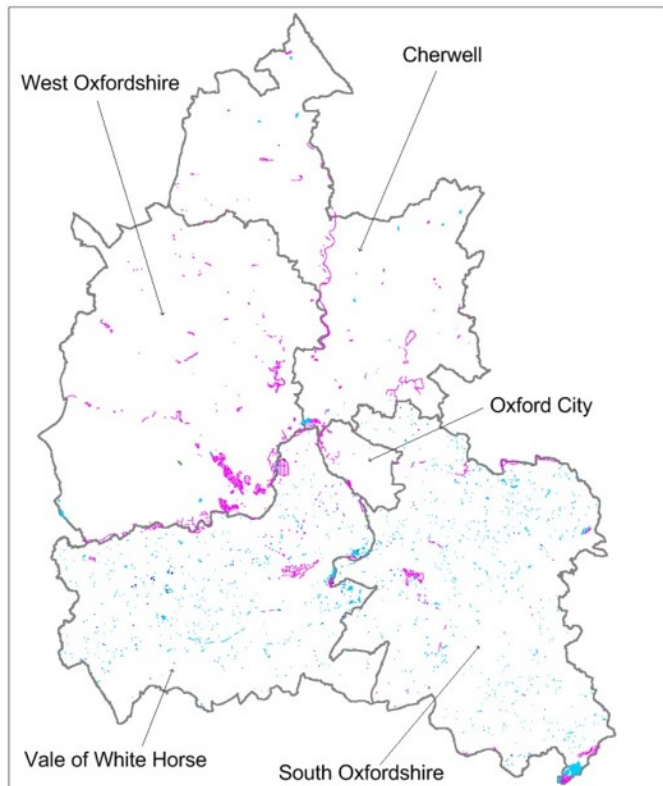
## Great Crested Newt Breeding Ponds

Name of LERC	Thames Valley Environmental Records Centre (TVERC)
Contact for enquiries	<a href="http://www.tverc.org">www.tverc.org</a>
Case study	Identifying ponds where great crested newts are breeding.
Summary	<p>Natural England are proposing to change how European Protected Species licenses are issued (when such species are affected by development) and move towards a landscape approach to favourable conservation status for great crested newts (GCN).</p> <p>This means that local planning authorities will need to identify where the important areas for newts are.</p> <p>TVERC mapped ponds in South Oxfordshire and Vale of White Horse and identified where great crested newts (GCN) were breeding, and where they were not.</p>
Issue/project to be addressed	<p>Ponds are not well-mapped due to their ephemeral nature and small size. Incidences where a survey has taken place, but a species has not been found are also not well-recorded. Therefore South Oxfordshire and Vale of White Horse did not know where the important areas for newts were.</p>
Action taken	<p>TVERC selected ponds using up-to-date OS Master Map and landline data (2010 and 2017) and aerial photography interpretation to create a single layer of pond polygons.</p> <p>This data was cleaned to remove any ditches or waterbodies which might have been included in the layer. The aerial photography was checked to confirm the presence of ponds already identified, removing any non-pond habitats or temporary ponds (such as those in quarries) from this layer. Any missing ponds were mapped as required.</p> <p>The ponds layer was then attributed to match the existing TVERC habitats layer and added to the habitats layer.</p> <p>The ponds layer was then attributed to</p>

	match the existing records of GCN and negative records where surveys have been carried out but no GCN found. In addition, other water bodies, such as water tanks and ditches, with GCN were attributed to mention the presence of the species.
Results/The change that has been made	TVERC have mapped 2.956 ponds in South Oxfordshire and Vale of White Horse, of which 118 have GCN, 51 with positive records and 67 with negative records (map 1).  This will provide South and Vale with baseline information on GCN distribution in the region to facilitate targeted surveys to improve that knowledge.
Sharing best Practice	This could be carried out by LERCs in other areas of the country.
Any other information	We have also carried out pond mapping for Cherwell District.

Map 1

Results of pond mapping in South and Vale compared with other Districts



Map produced by Thames Valley Environmental Records Centre in 2017  
 © Crown Copyright. All rights reserved Oxfordshire County Council Licence No 100023343 (2017)  
 FOR REFERENCE PURPOSES ONLY. NO FURTHER COPIES MAY BE MADE.